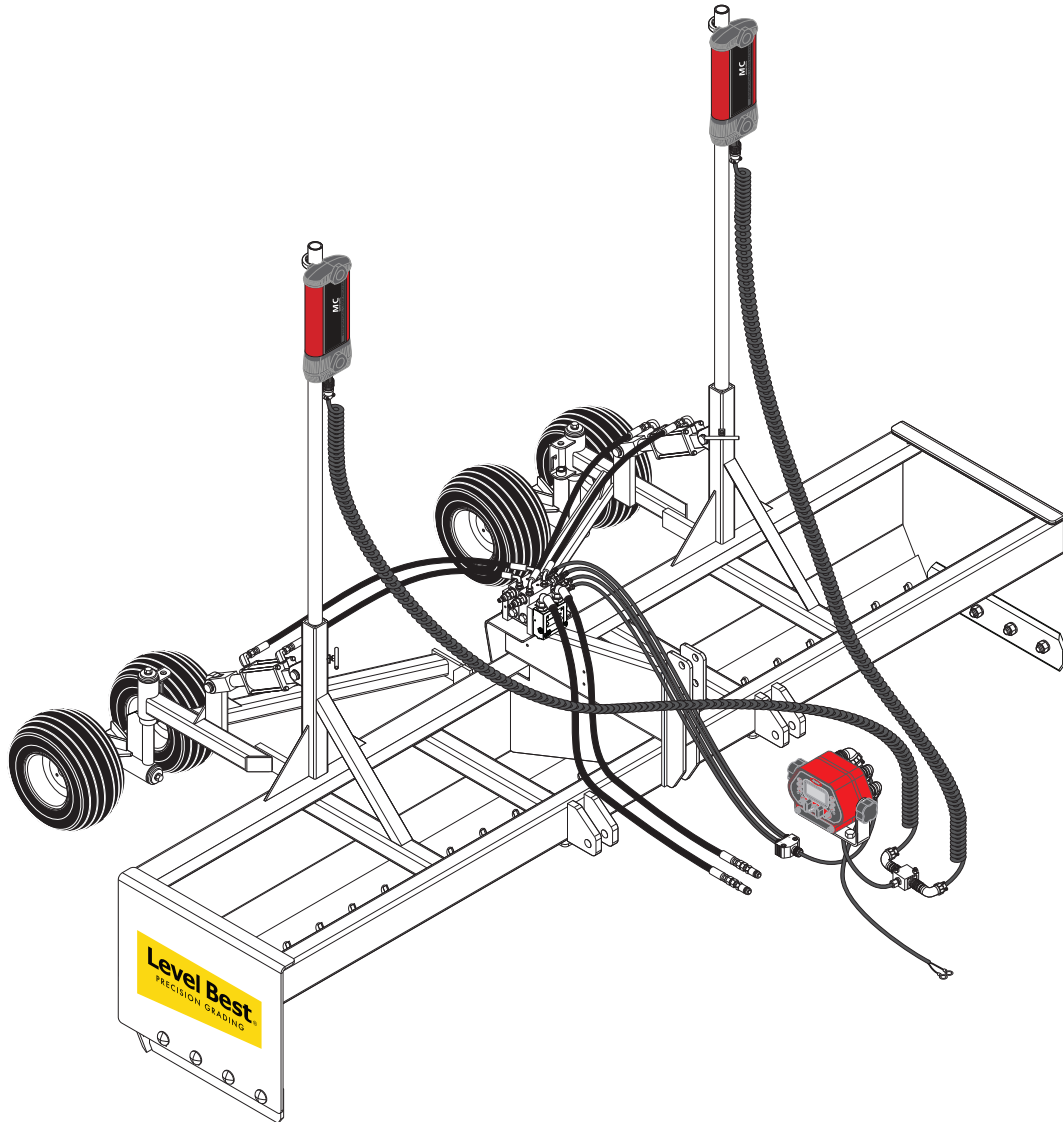


PARTS MANUAL

TRACTOR BOX - DOUBLE ASN4532



ATI Corporation
New Holland, PA 17557
Phone (717) 354-8721 • FAX (717) 354-2162
1-800-342-0905
www.level-best.com

ATI Corporation
1-800-342-0905
www.level-best.com

COPYRIGHT 2022 by
ATI Corporation
250 Earland Drive
New Holland, PA 17557 U.S.A.

DISCLAIMER

THE INFORMATION IN THIS MANUAL IS PROVIDED TO PROMOTE THE SAFE USE OF, AND ASSIST THE OPERATOR IN ACHIEVING THE BEST PERFORMANCE FROM, LASER GRADING BOX DESCRIBED HEREIN, FOR THEIR INTENDED APPLICATIONS.

USING THIS DOCUMENT

This document is expected to be used as an electronic pdf document as well as a printed document. Various software can be used to view the document, including [Adobe[®] Acrobat Reader DC](#). Other pdf viewers are available.

As an electronic document, various links are included to help you navigate the document and find the applicable information. Links may be cross references within the document or an external link to an Internet page. Links shown in blue, such as the link to the Acrobat Reader DC software in the preceding paragraph. For an Internet link to work, the device must be connected to the Internet in some way. Data charges may apply.

NOTE: Most pdf viewer software provides a command for previous view. In Acrobat Reader, for instance, the previous view on the View/Page Navigation menu. Keyboard shortcuts are also available, such as Alt+Left Arrow and Alt+Right Arrow for Previous View and Next View, respectively.

Para-Level Grading Box PARTS LIST

Table of Contents



ATI Corporation
1-800-342-0905
www.level-best.com

SUBJECT	PAGE NO.
Disclaimer	i
Using This Document	i
Standard Models	ii
Table of Contents	iii
Warranty.....	iv
Serial Number Information.....	iv
Where To Get Parts and Service	iv
How To Order Parts	v
Notes	vi
List Of Parts Illustrations	1



Para-Level Grading Box PARTS LIST

ATI Corporation
1-800-342-0905
www.level-best.com

WARRANTY

This Level-Best Grading System is designed and manufactured to high standards. ATI Corporation, therefore, guarantees this Level-Best product to be free from defect in workmanship and materials for three (3) years from purchase date. If the machine is to be used for rental purposes the warranty is limited to ninety (90) days.

Components supplied by outside vendors (e.g. cylinders, hydraulic valves and components, electronic modules, and machine control technology systems) are warranted separately by their respective manufacturers. The warranty periods of these components are generally one (1) year from date of purchase.

Neither Level-Best nor hydraulic component manufacturers will cover normal wear or failure due to hydraulic oil contamination from the power source. ALWAYS start with clean oil and filters prior to installation and operation.

Misuse, abuse, misapplication, and unauthorized alterations will void this warranty.

All warranty work must be performed by an authorized Level-Best dealer and authorized by ATI Corporation. All Level-Best parts suspected of failure must be returned to ATI Corporation for warranty analysis prior to any credit being issued.

SERIAL NUMBER INFORMATION

It is very important that the correct serial number is provided when ordering parts. The serial number plate is located on the main frame. Please mark the model and serial number of your Laser Grading Box in the space provided below in case the plate on your Laser Grading Box gets lost or damaged.

Model..... Serial Number
Dealer Name Dealer Phone Number

WHERE TO GET PARTS AND SERVICE

When replacement parts and service are required, ATI Corporation recommends returning to the dealer from which the product or optional kit was purchased. By going to the dealer, you are dealing with people that understand and know ATI products. Our dealers have the experience servicing these machines and stock the most common parts required to keep your equipment in top working condition.

NOTE: ATI Corporation reserves the right to discontinue models at any time, change specifications, and improve design without notice and without incurring obligation on goods previously purchased and to discontinue supplying any part listed, when the demand does not warrant production.

Para-Level Grading Box PARTS LIST

Level Best[®]
PRECISION GRADING

ATI Corporation
1-800-342-0905
www.level-best.com

HOW TO ORDER PARTS

Parts lists contained in this book have been prepared to help you when ordering spare and/or replacement parts. Your order will be filled promptly and accurately when the following information is provided:

1. Model and serial number of the unit. (This specifically identifies the equipment you have and permits us to verify the part numbers in your order.)
2. The parts list page number and catalog number. Include catalog revision number, if applicable.
3. The **Item** number for each part. **Item** numbers on the parts list page correspond with the numbers shown on the illustration.
4. **Part Number** as it appears in the parts list. In most cases this will be a nine-digit number; for example: 315-005-000.
5. The **Description** for the part as it appears on the parts list page.

When a complete assembly is needed, use the assembly number given in the parts list. If no assembly number is given, order by main assembly title and list only the item numbers you want. For example: “Wheel Frame Assembly per 315-509-000, Items 2 through 8, inclusive”.

The part ordered may have a new part number, or the part may have been replaced by a newer design with a different part number. In these cases your acknowledgement, shipping papers and invoices will be written listing the current part number first; the old part number you referred to will follow the part description.

Our purpose in doing this is to tell you that the parts are fully interchangeable. This will avoid any unnecessary correspondence or delay in processing your order. We suggest that you add any new number to your parts lists for future use.

Para-Level Grading Box PARTS LIST

List Of Parts Illustrations



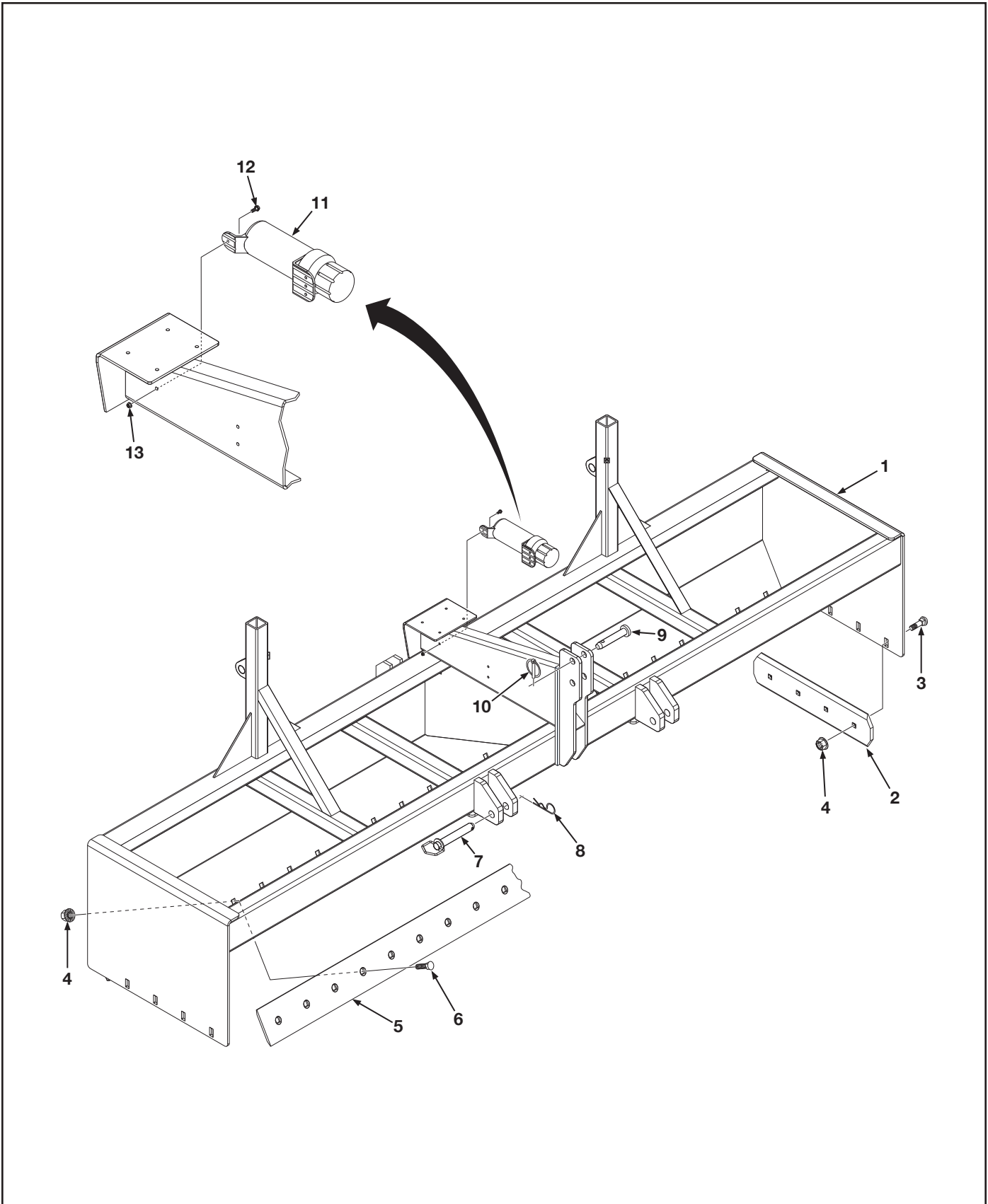
ATI Corporation
1-800-342-0905
www.level-best.com

Figure 1. Main Frame and Cutting Edges	2
Figure 2. Wheel Frame and Related Parts.....	4
Figure 3. Caster Fork and Wheel	6
Figure 4. Hydraulics Cylinder Only.....	8
Figure 5. Hydraulics With Optional Valve Assembly	10
Figure 6. Hydraulic Valve Assembly	12
Figure 7. Laser Controls and Related Parts - Apache CB52/Spectra CB30	14
Figure 8. Control Panel Apache CB52/Spectra CB30, Laser Receiver 360°, Cables and Related Parts....	16
Figure 9. Laser Controls and Related Parts - Leica iCON.....	18
Figure 10. Control Panel Leica iCON, Laser Receiver 360°, Cables and Related Parts	20
Figure 11. Cylinder Assembly, 3" Bore x 6" Stroke	22
Figure 12. Drawbar Kit, with Wheel Locks (Optional).....	24
Figure 13. Decals	26

Para-Level Grading Box PARTS LIST

Figure 1. Main Frame and Cutting Edges

ATI Corporation
1-800-342-0905
www.level-best.com



Para-Level Grading Box PARTS LIST



Figure 1. Main Frame and Cutting Edges

ATI Corporation
 1-800-342-0905
 www.level-best.com

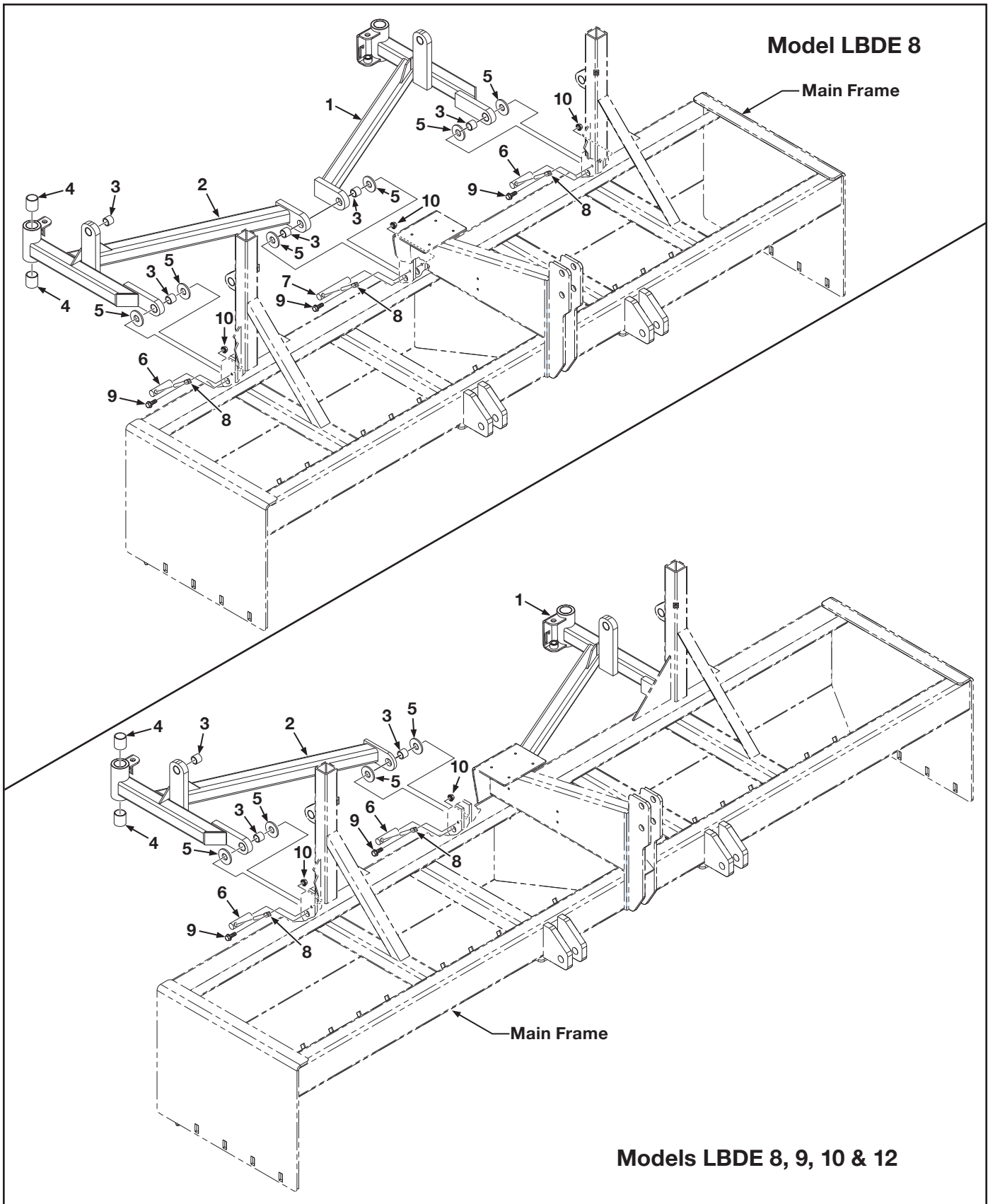
Item	Part No.	Qty	Description
1	315-138-100	1	Frame, Main, Tractor, Super Capacity Double, 8'
	315-139-100	1	Frame, Main, Tractor, Super Capacity Double, 9'
	315-140-100	1	Frame, Main, Tractor, Super Capacity Double, 10'
	315-141-100	1	Frame, Main, Tractor, Super Capacity Double, 12'
2	000-190-082	2	Edge, Cutting, End, DBF, 25" Long
	000-150-265	8	Bolt, Carriage, 5/8"-11UNC x 2" Long
4	000-158-142	AR	Nut, Hex, Serrated Flange, 5/8"-11UNC
5	000-190-153	1	Edge, Cutting, DBF, 96" Long
	000-190-091	1	Edge, Cutting, DBF, 108" Long
	000-190-177	1	Edge, Cutting, DBF, 120" Long
	000-190-178	1	Edge, Cutting, DBF, 144" Long
6	000-150-269	AR	Bolt, Plow, 5/8"-11UNC x 2-1/4" Long
7	000-161-075	2	Pin, Hitch, 1-1/8" Dia. x 7" Long, Category II
8	000-161-019	2	Pin, Hair, Cotter, .177" Wire Dia x 3-3/4" Long
9	000-161-085	1	Pin, Top Link, 1" Dia. x 5-1/4" Long, Category II
10	000-161-028	2	Pin, Lynch, Locking, 7/16"
11	001-001-083	1	Canister, Operators Manual
12	000-150-078	3	Bolt, Serrated Flange, 5/16"-18UNC x 1" Long
13	000-158-064	3	Nut, Serrated Flange, 5/16"-18UNC

AR - As Required NSS - Not Serviced Separately ASN - After Serial No. BSN - Before Serial No. LP - Local Purchase

Para-Level Grading Box PARTS LIST

Figure 2. Wheel Frame and Related Parts

ATI Corporation
1-800-342-0905
www.level-best.com



Para-Level Grading Box PARTS LIST



Figure 2. Wheel Frame and Related Parts

ATI Corporation
1-800-342-0905
www.level-best.com

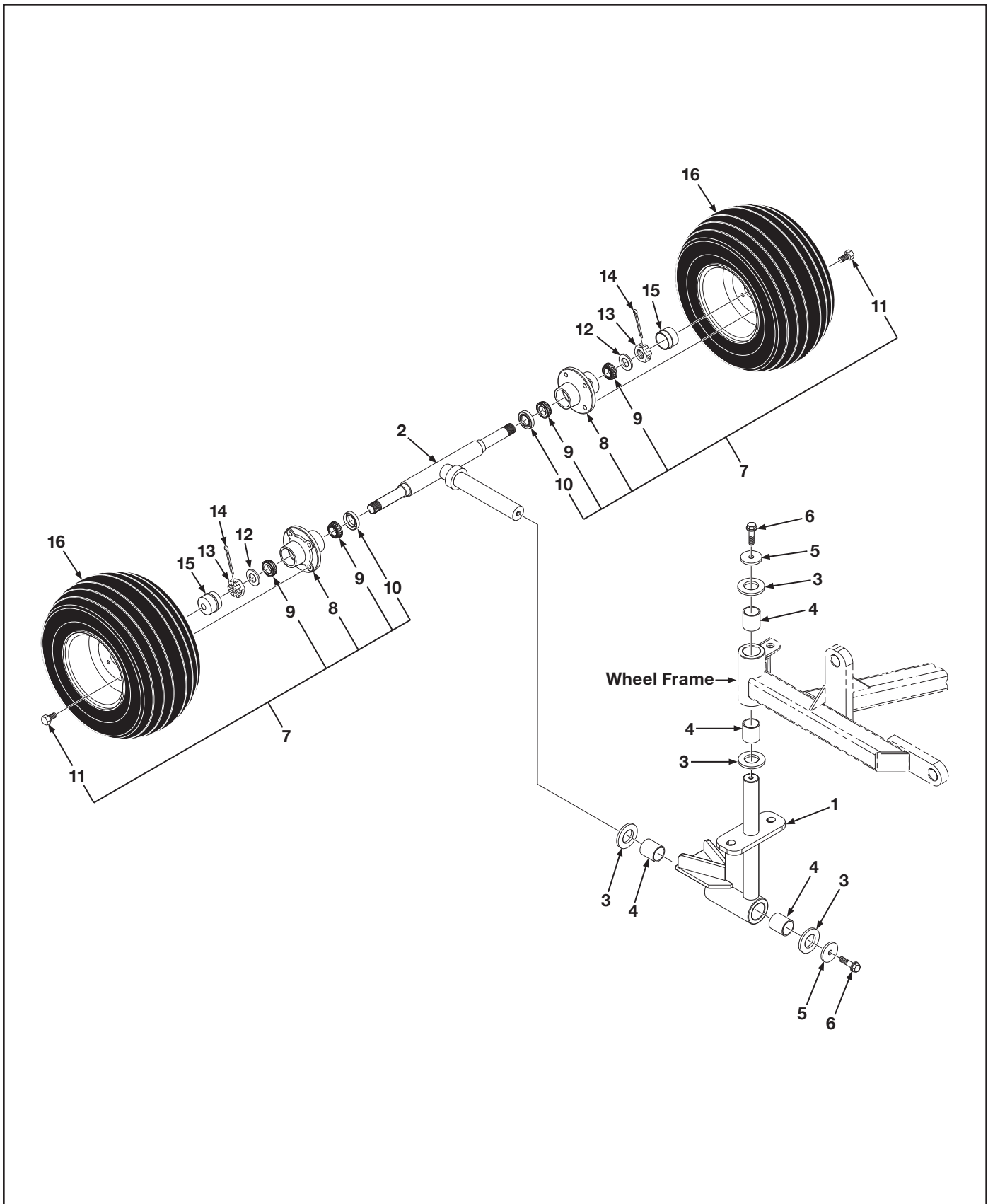
Item	Part No.	Qty	Description
1	315-099-200	1	Frame, Wheel, Tractor, Super Capacity Double, Left Side Includes Items 3 & 4
2	315-099-250	1	Frame, Wheel, Tractor, Super Capacity Double, Right Side Includes Items 3 & 4
3	000-176-174	4	Bushing, Wheel Frame, 1-1/4" OD x 1" ID x 1" Long
4	000-176-171	4	Bushing, Wheel Caster, 1-3/4" OD x 1-1/2" ID x 1-1/2" Long
5	000-155-003	8	Washer, Flat, 1-1/2" OD x 1" ID x 14 Gauge Thick
6	000-161-151	2	Pin, Link, 1" Dia. x 3-5/8" Long, Model 8
	000-161-151	4	Pin, Link, 1" Dia. x 3-5/8" Long, Models 9, 10 & 12
7	000-161-117	1	Pin, Link, 1" Dia. x 4-1/2" Long, Model 8
8	000-161-024	4	Pin, Retainer, 3/8" Dia. x 3-1/4" Long
9	000-150-082	4	Bolt, Hex Head, 5/16"-18UNC x 1-1/4" Long
10	000-158-066	4	Nut, Hex, Nylon Lock, 5/16"-18UNC

AR - As Required NSS - Not Serviced Separately ASN - After Serial No. BSN - Before Serial No. LP - Local Purchase

Para-Level Grading Box PARTS LIST

ATI Corporation
1-800-342-0905
www.level-best.com

Figure 3. Caster Fork and Wheel



Para-Level Grading Box PARTS LIST



Figure 3. Caster Fork and Wheel

ATI Corporation
 1-800-342-0905
 www.level-best.com

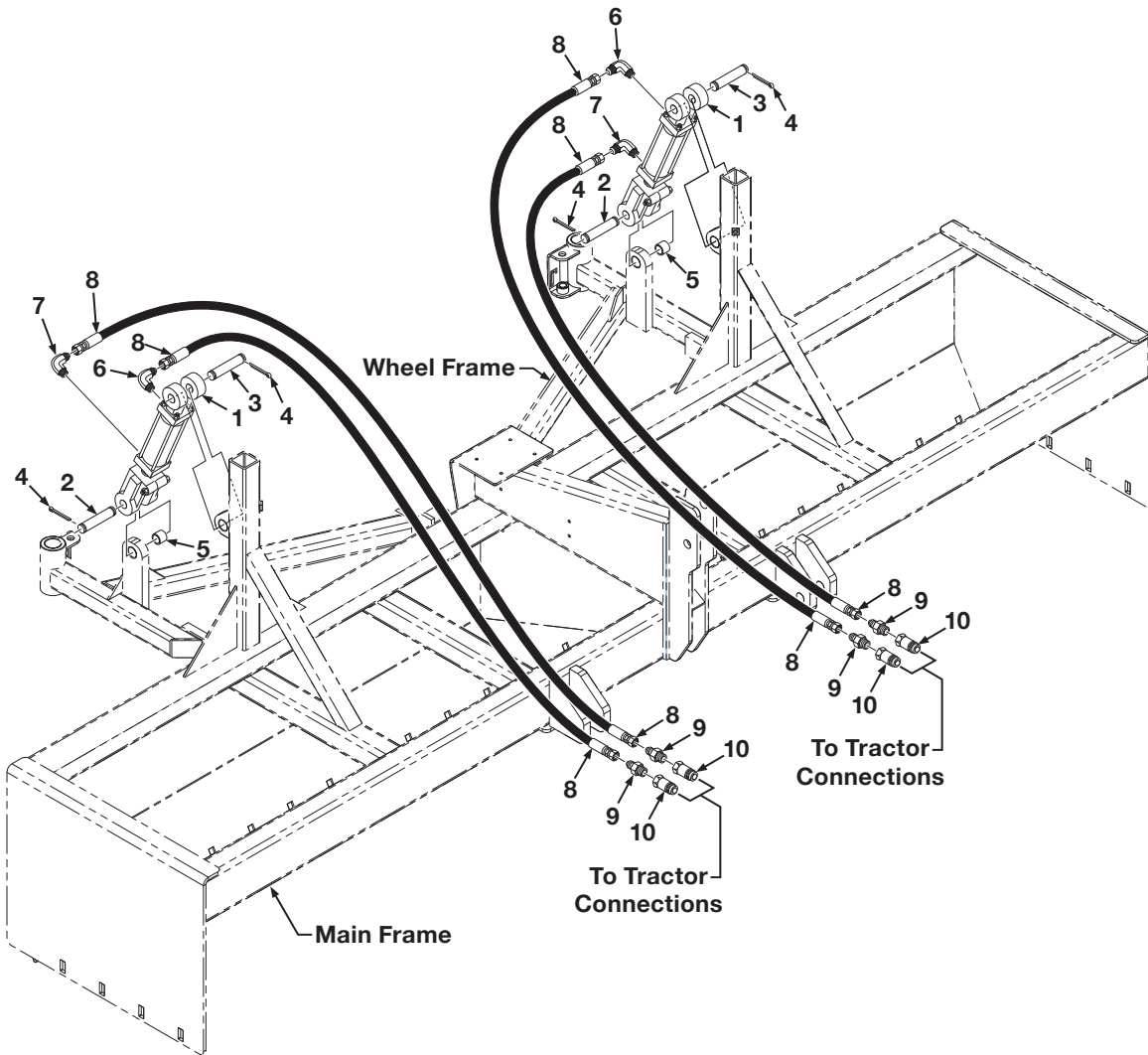
Item	Part No.	Qty	Description
1	315-065-310	2	Caster
2	315-065-400	2	Axle
3	000-155-002	4	Washer, Flat, 2-1/4" OD x 1-1/2" ID x 10 Gauge Thick
4	000-176-171	4	Bushing, Wheel Frame, 1-3/4" OD x 1-1/2" ID x 1-1/2" Long
5	000-155-004	4	Washer, Flat, 2-1/4" OD x 17/32" ID x 1/4" Thick
6	000-150-375	4	Bolt, Serrated Flange, 1/2"-13UNC x 1-1/4" Long
7	001-001-069	4	Hub Assembly, Includes Items 8 thru 11
8	001-001-074	1	Hub, Wheel, With Outer Race
9	000-176-184	2	Bearing, Roller, Tapered, 1" Dia. Bore
10	000-166-457	1	Seal, Grease, 1.983" OD x 1-219" ID x .475" Thick
11	000-150-218	4	Bolt, Lug, 1/2"-20UNC x 1-1/4" Long
12	000-155-003	4	Bushing, Washer, 1-1/2" OD x 1" ID x 14 Gauge
13	000-158-193	4	Nut, Castle, 1"-14UNF
14	000-161-078	4	Pin, Cotter, 1/8" Dia. x 2" Long
15	001-001-084	4	Cap, Dust
16	001-001-057	2	Wheel/Tire, Foam-Filled, 18.5/8.50-8

AR - As Required NSS - Not Serviced Separately ASN - After Serial No. BSN - Before Serial No. LP - Local Purchase

Para-Level Grading Box PARTS LIST

Figure 4. Hydraulics Cylinder Only

ATI Corporation
1-800-342-0905
www.level-best.com



Para-Level Grading Box PARTS LIST



ATI Corporation
 1-800-342-0905
 www.level-best.com

Figure 4. Hydraulics Cylinder Only

Item	Part No.	Qty	Description
1	000-166-537	1	Cylinder, Hydraulic, 3" Bore x 6" Stroke, See Breakdown Figure 11 Includes Items 2 thru 4
2	000-161-068	1	Pin, Cylinder, 1" Dia. x 3-3/8" Long
3	000-161-162	1	Pin, Cylinder, 1" Dia. x 4" Long
4	000-161-137	4	Pin, Cotter, 3/16" Dia. x 1-3/4" Long
5	000-176-174	2	Bushing, Wheel Frame, 1-1/4" OD x 1" ID x 1" Long
6	000-166-488	2	Elbow, 90°, 6MJ x 8MB, With Orifice
7	000-166-417	2	Elbow, 90°, 6MJ x 8MB
8	000-166-480	4	Hose, 1/2" Dia. x 126" Long x 6FJX x 8FJX, 3,000 PSI
9	000-166-168	4	Adapter, Straight, 8MJ x 8MP
10	000-166-210	4	Coupler, Quick, Ag, Male, 1/2"

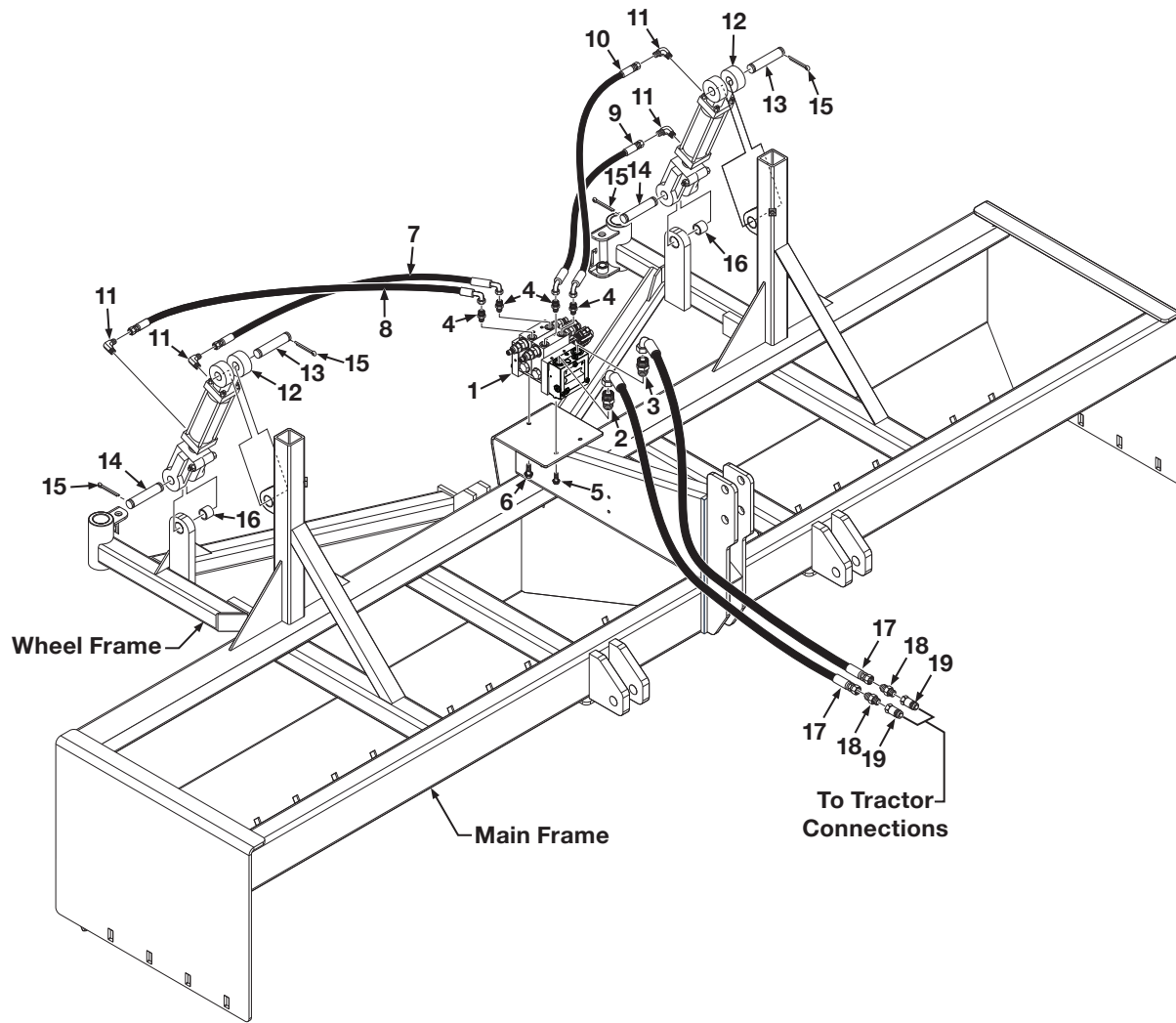
- BH-Bulkhead
- MP-Male Pipe
- FP-Female Pipe
- FPX-Female Pipe Swivel
- MB-Male O-Ring Boss
- FB-Female O-Ring Boss
- MJ-Male JIC
- FJ-Female JIC
- FJX-Female JIC Swivel

AR - As Required NSS - Not Serviced Separately ASN - After Serial No. BSN - Before Serial No. LP - Local Purchase

Para-Level Grading Box PARTS LIST

Figure 5. Hydraulics With Optional Valve Assembly

ATI Corporation
1-800-342-0905
www.level-best.com



Para-Level Grading Box PARTS LIST



Figure 5. Hydraulics With Optional Valve Assembly

ATI Corporation
1-800-342-0905
www.level-best.com

Item	Part No.	Qty	Description
1	000-166-875	1	Valve Assembly, Hydraulic MVB10, Includes Items 2 & 3, See Breakdown Figure 6
2	000-166-824	1	Valve, Check, 12OFS x 12MB, (DO NOT REMOVE FROM ITEM 1)
3	000-166-694	1	Fitting, Adapter, 12OFS x 12MB
4	000-166-685	4	Fitting, Adapter, 6OFS x 6MB
5	000-150-074	2	Bolt, Serrated Flange, 5/16"-18UNC x 3/4" Long
6	000-150-119	1	Bolt, Serrated Flange, 3/8"-16UNC x 3/4" Long
7	000-166-768	1	Hose, 3/8" Dia x 40" Long x 6FFX x 6FFX90, 3,000 PSI, Models LBDE 8 & 9
	000-166-765	1	Hose, 3/8" Dia x 48" Long x 6FFX x 6FFX90, 3,000 PSI, Models LBDE 10
	000-166-779	1	Hose, 3/8" Dia x 60" Long x 6FFX x 6FFX90, 3,000 PSI, Models LBDE 12
8	000-166-768	1	Hose, 3/8" Dia x 40" Long x 6FFX x 6FFX90, 3,000 PSI, Models LBDE 8 & 9
	000-166-765	1	Hose, 3/8" Dia x 48" Long x 6FFX x 6FFX90, 3,000 PSI, Models LBDE 10
	000-166-779	1	Hose, 3/8" Dia x 60" Long x 6FFX x 6FFX90, 3,000 PSI, Models LBDE 12
9	000-166-768	1	Hose, 3/8" Dia x 40" Long x 6FFX x 6FFX90, 3,000 PSI, Models LBDE 8 & 9
	000-166-765	1	Hose, 3/8" Dia x 48" Long x 6FFX x 6FFX90, 3,000 PSI, Models LBDE 10
	000-166-779	1	Hose, 3/8" Dia x 60" Long x 6FFX x 6FFX90, 3,000 PSI, Models LBDE 12
10	000-166-768	1	Hose, 3/8" Dia x 40" Long x 6FFX x 6FFX90, 3,000 PSI, Models LBDE 8 & 9
	000-166-765	1	Hose, 3/8" Dia x 48" Long x 6FFX x 6FFX90, 3,000 PSI, Models LBDE 10
	000-166-779	1	Hose, 3/8" Dia x 60" Long x 6FFX x 6FFX90, 3,000 PSI, Models LBDE 12
11	000-166-693	4	Elbow, 90°, 6OFS x 8MB
12	000-166-537	1	Cylinder, Hydraulic, 3" Bore x 6" Stroke, See Breakdown Figure 11 Includes Items 11 thru 13
13	000-161-068	1	Pin, Cylinder, 1" Dia. x 3-3/8" Long
14	000-161-162	1	Pin, Cylinder, 1" Dia. x 4" Long
15	000-161-137	4	Pin, Cotter, 3/16" Dia. x 1-3/4" Long
16	000-176-174	2	Bushing, Wheel Frame, 1-1/4" OD x 1" ID x 1" Long
17	000-166-810	2	Hose, 5/8" Dia x 80" Long x 10MORB x 12FFORX90, 4,060 PSI
18	000-166-884	2	Adapter, Straight, 10FB x 8MP; 6404-10-08
19	000-166-210	2	Coupler, Quick, Ag, Male, 1/2"

- BH-Bulkhead
- MP-Male Pipe
- FP-Female Pipe
- FPX-Female Pipe Swivel
- MB-Male O-Ring Boss
- FB-Female O-Ring Boss
- MJ-Male JIC
- FJ-Female JIC
- FJX-Female JIC Swivel

AR - As Required NSS - Not Serviced Separately ASN - After Serial No. BSN - Before Serial No. LP - Local Purchase

Para-Level Grading Box PARTS LIST



Figure 6. Hydraulic Valve Assembly

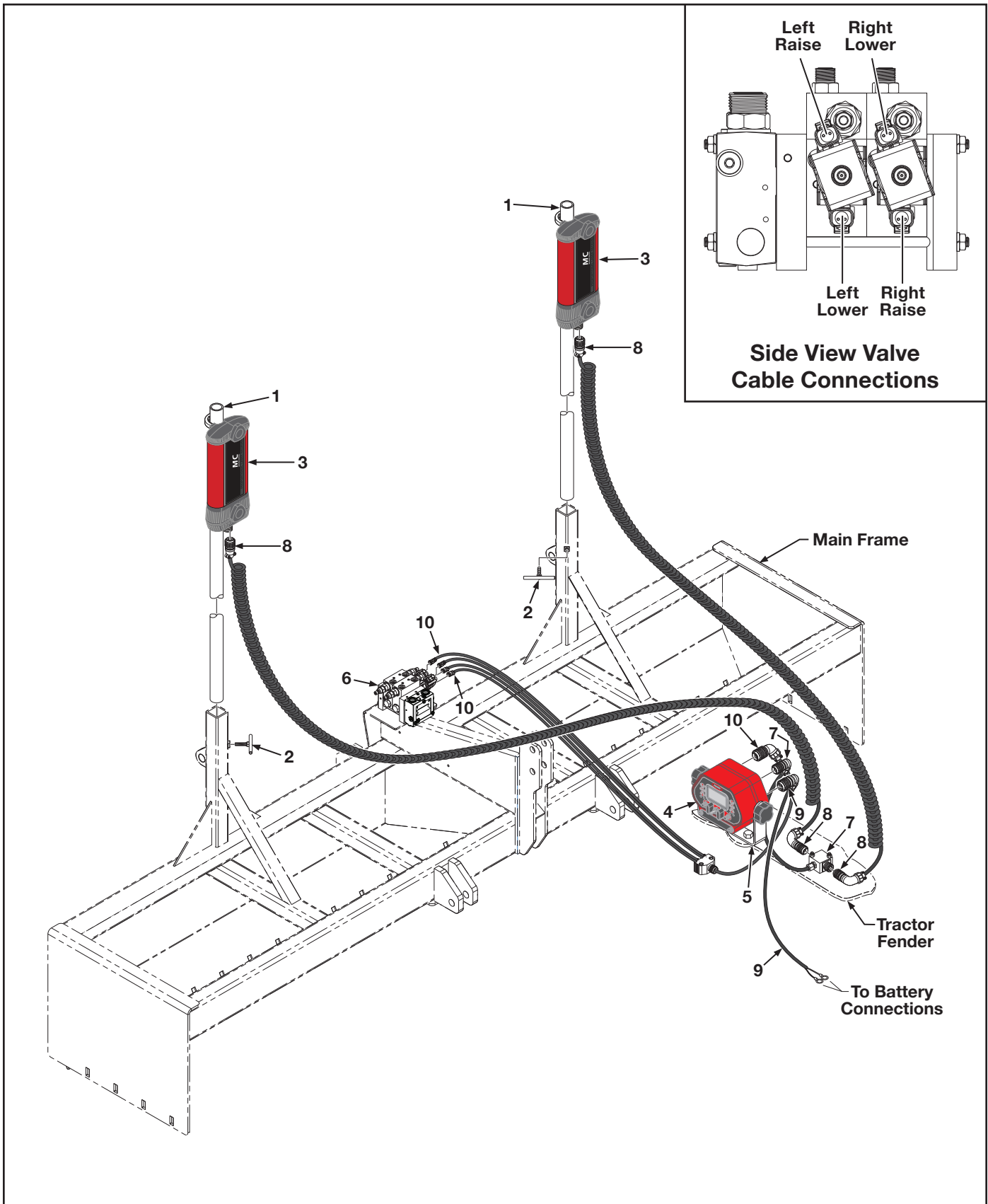
ATI Corporation
 1-800-342-0905
 www.level-best.com

Item	Part No.	Qty	Description
1	000-166-875	1	Valve Assembly, Hydraulic MVB10, Includes Items 2 thru 8
2	000-166-824	1	Valve, Check, 12OFS x 12MB, (DO NOT REMOVE FROM ITEM 1)
3	000-166-694	1	Fitting, Adapter, 12OFS x 12MB
4	000-166-685	4	Fitting, Adapter, 6OFS x 6MB
5	000-166-844	4	Valve, Counter Balance
6	NSS	2	Stem, Includes Item 7
7	NSS	2	Nut
8	000-166-843	4	Coil

AR - As Required NSS - Not Serviced Separately ASN - After Serial No. BSN - Before Serial No. LP - Local Purchase

Para-Level Grading Box PARTS LIST

**Figure 7. Laser Controls and Related Parts -
Apache CB52/Spectra CB30**



Para-Level Grading Box PARTS LIST



**Figure 7. Laser Controls and Related Parts -
Apache CB52/Spectra CB30**

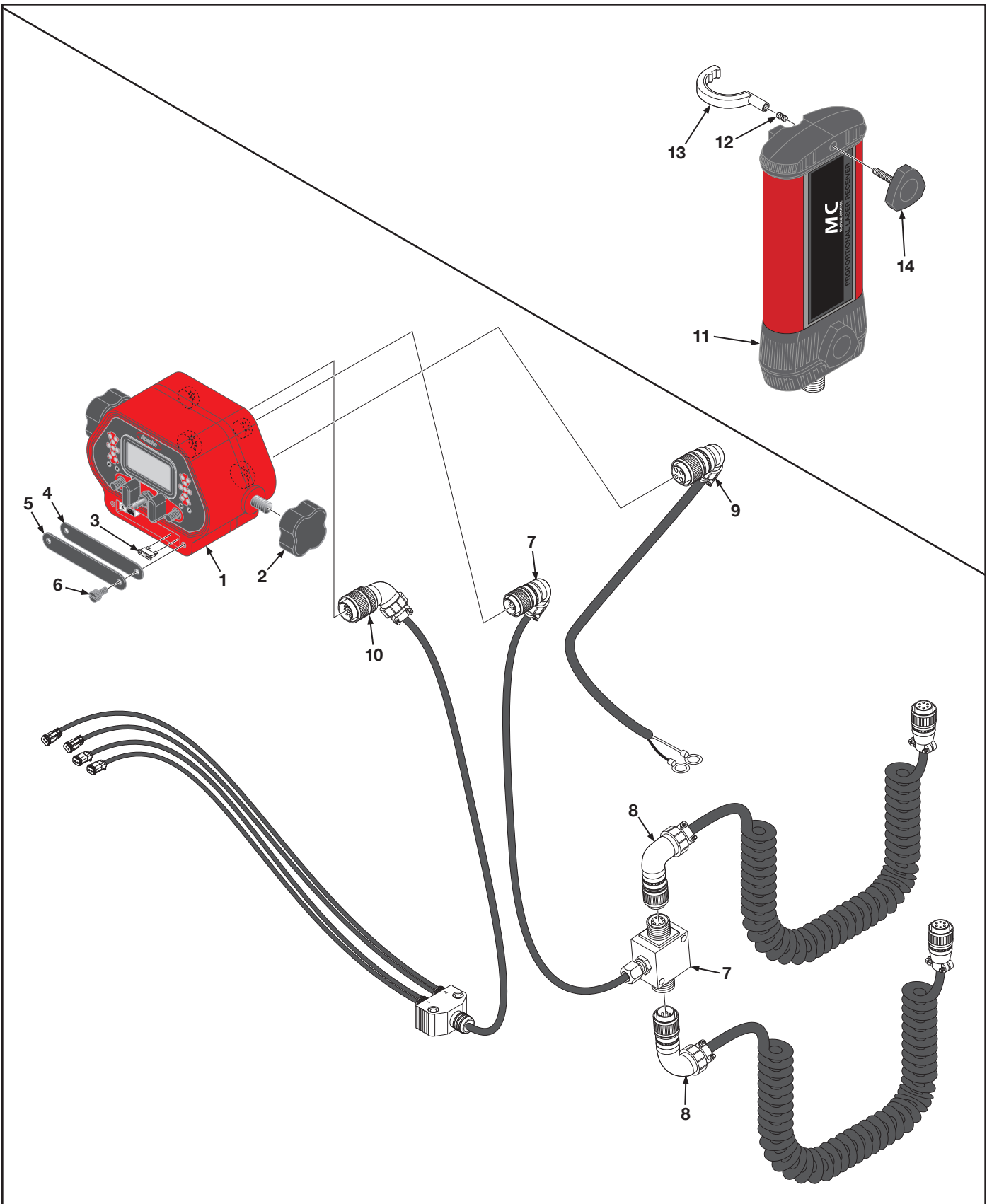
ATI Corporation
1-800-342-0905
www.level-best.com

Item	Part No.	Qty	Description
1	001-001-108	2	Pole, Mast, 1-1/2" Dia. x 9' Long
2	001-001-053	2	Handle, Tee
3	000-200-093	2	Receiver, Apache B5MC Red
	000-200-275	2	Receiver, Spectra B5MC Yellow
4	000-200-176	2	Panel, Control, Apache CB52 Red, See Breakdown Figure 8
	000-200-213	2	Panel, Control, Spectra CB30 Yellow, See Breakdown Figure 8
5	001-001-075	2	Bracket, Control Panel
6	000-166-875	1	Valve Assembly, Hydraulic MVB10
7	000-200-185	1	Cable, Dual Junction Block, Junction, 3' Long
8	000-200-187	2	Cable, Receiver, Coiled, 16' Long
9	000-200-097	1	Cable, Power, 2-Wire, 20' Long
10	000-200-329	1	Cable, Solenoid, Dual, 90°, Apache, 16' Long

AR - As Required NSS - Not Serviced Separately ASN - After Serial No. BSN - Before Serial No. LP - Local Purchase

Para-Level Grading Box PARTS LIST

Figure 8. Control Panel Apache CB52/Spectra CB30,
Laser Receiver 360°, Cables and Related Parts



Para-Level Grading Box PARTS LIST



**Figure 8. Control Panel Apache CB52/Spectra CB30,
Laser Receiver 360°, Cables and Related Parts**

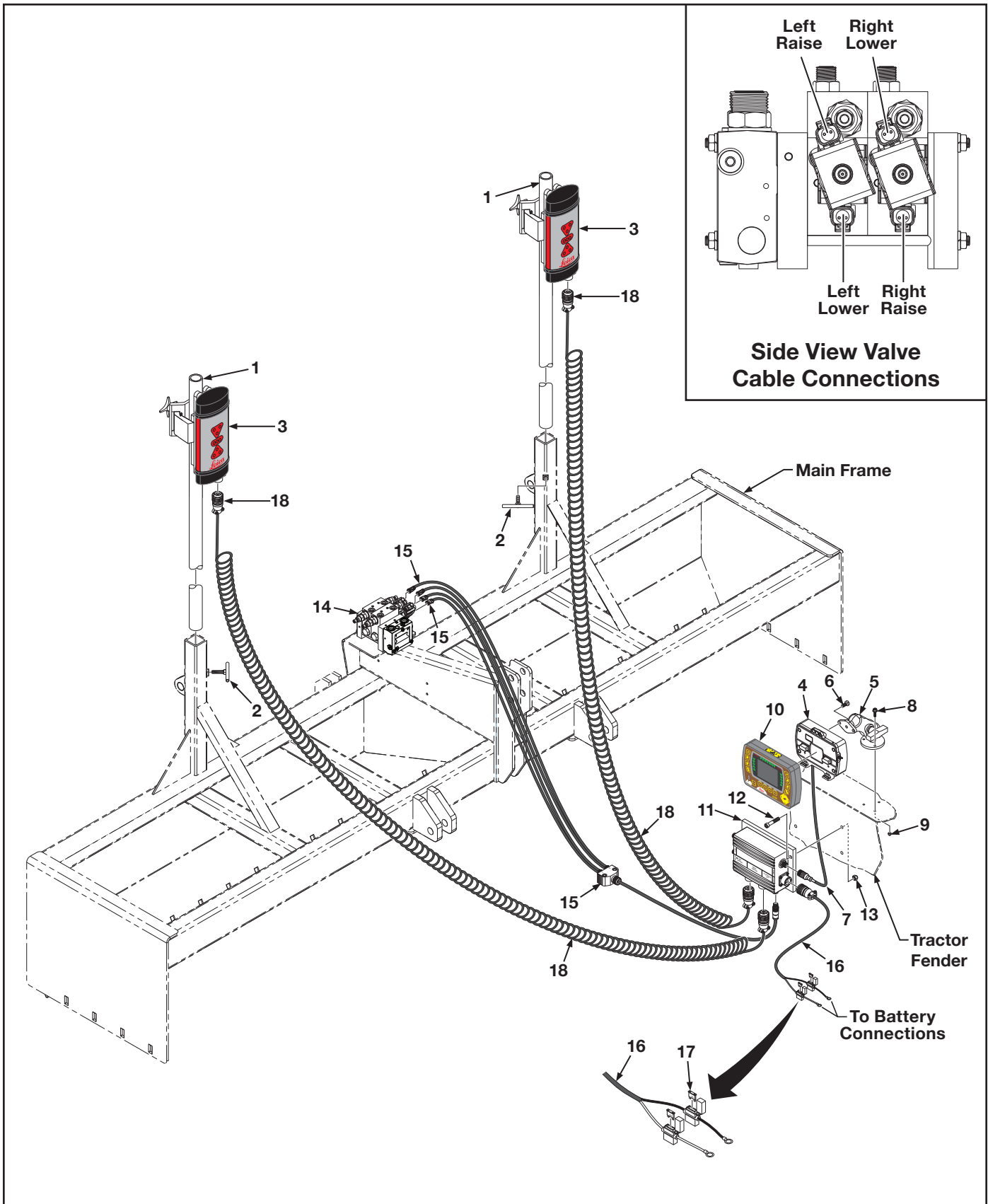
ATI Corporation
1-800-342-0905
www.level-best.com

Item	Part No.	Qty	Description
1	000-200-176	1	Panel, Control, Apache CB52 Red, Includes Items 2 thru 6
	000-200-213	1	Panel, Control, Spectra CB30 Yellow, Includes Items 2 thru 6
2	000-200-112	2	Knob
3	LP	1	Fuse, 25 Amp
4	000-200-115	1	Gasket, Front Cover Plate
5	000-200-114	1	Plate, Front Cover
6	000-200-113	2	Screw, Thumb
7	000-200-185	1	Cable, Dual Junction Block, Junction, 3' Long
8	000-200-187	2	Cable, Receiver, Coiled, 16' Long
9	000-200-097	1	Cable, Power, 2-Wire, 20' Long
10	000-200-329	1	Cable, Solenoid, Dual, 90°, Apache, 16' Long
11	000-200-093	1	Receiver, Apache B5MC Red, Includes Items 12 thru 14
	000-200-275	1	Receiver, Spectra B5MC Yellow, Includes Items 12 thru 14
12	000-161-094	2	Spring, Clamp, Compression
13	000-200-108	2	Clamp, Universal, 2" Dia.
14	000-200-107	2	Knob, Clamp

AR - As Required NSS - Not Serviced Separately ASN - After Serial No. BSN - Before Serial No. LP - Local Purchase

Para-Level Grading Box PARTS LIST

Figure 9. Laser Controls and Related Parts -
Leica iCON



Para-Level Grading Box PARTS LIST



**Figure 9. Laser Controls and Related Parts -
Leica iCON**

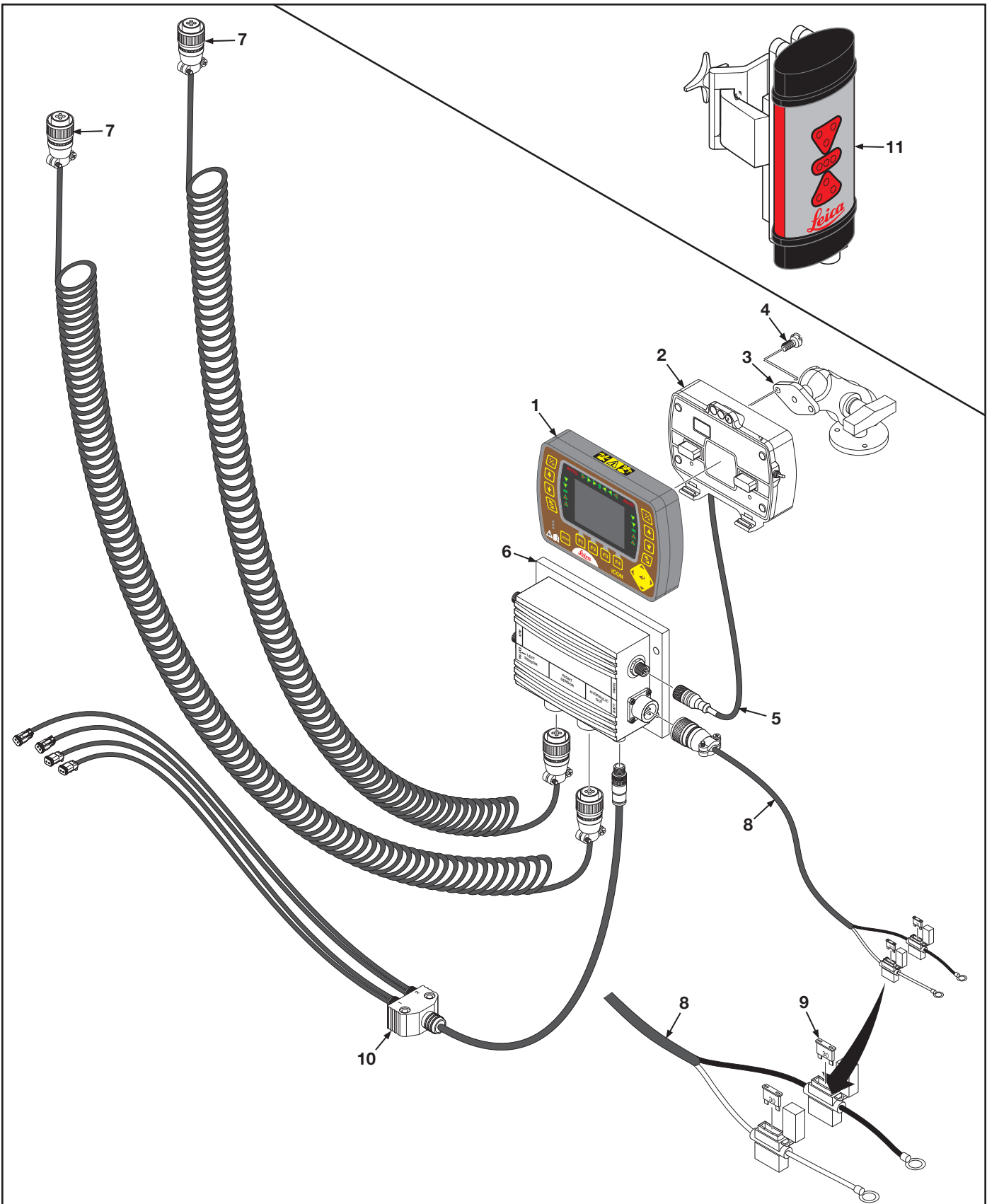
ATI Corporation
1-800-342-0905
www.level-best.com

Item	Part No.	Qty	Description
1	001-001-108	2	Pole, Mast, 1-1/2" Dia. x 9' Long
2	001-001-053	2	Handle, Tee
3	000-200-464	2	Receiver, Laser 360°, Receiver, Laser, 360°, MLS720
4	000-200-260	1	Cradle, Control Panel, Includes Items 5 thru 7
5	000-200-261	1	Ram Ball
6	000-150-006	2	Screw, Slot Head
7	000-200-262	1	Cable, Junction Box, Cradle
8	000-150-015	3	Bolt, Hex Head, SS, #10-24UNC x 3/4" Long
9	000-158-041	3	Nut, Hex Nylon Lock, SS, #10-24UNC
10	000-200-426	1	Control Panel, Leica iCON iCP32, See Breakdown Figure 10
11	000-200-263	1	Box, Junction
12	000-150-048	4	Bolt, Hex Head, SS, 1/4"-20UNC x 3/4" Long
13	000-158-050	4	Nut, Hex, Nylon Lock, SS, 1/4"-20UNC
14	000-166-875	1	Valve Assembly, Hydraulic MVB10
15	000-200-330	1	Cable, Solenoid, Dual, 16' Long, Leica iCON,
16	000-200-265	1	Cable, Power, 2-Wire, 20' Long, Includes Items 17
17	LP	2	Fuse, 30 Amp
18	000-200-463	2	Cable, Receiver, Coiled, 3-Wire, 9' Long

AR - As Required NSS - Not Serviced Separately ASN - After Serial No. BSN - Before Serial No. LP - Local Purchase

Para-Level Grading Box PARTS LIST

Figure 10. Control Panel Leica iCON, Laser Receiver 360°, Cables and Related Parts



Para-Level Grading Box PARTS LIST



Figure 10. Control Panel Leica iCON, Laser Receiver 360°, Cables and Related Parts

ATI Corporation
 1-800-342-0905
 www.level-best.com

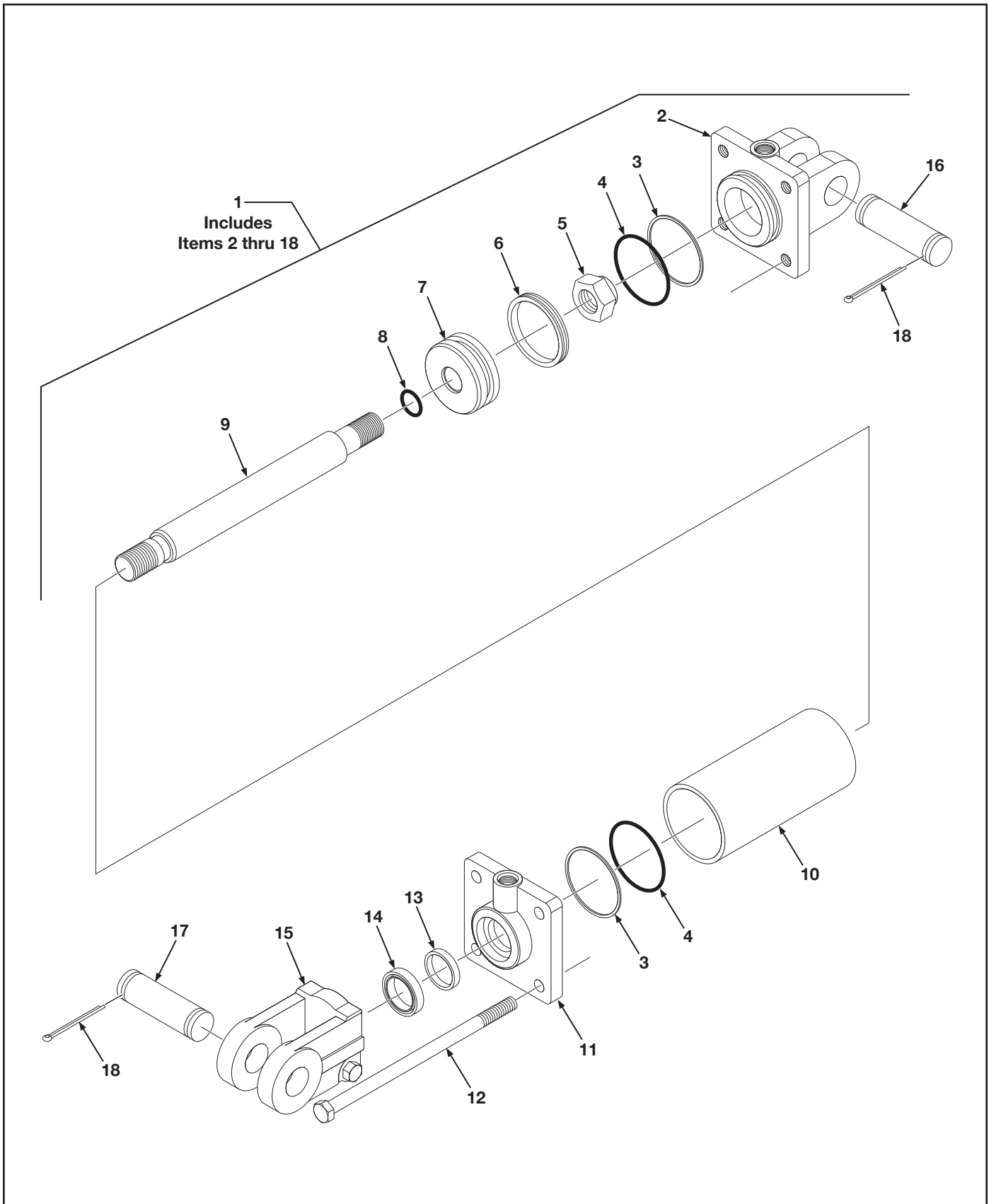
Item	Part No.	Qty	Description
1	000-200-426	1	Control Panel, iCP32 Leica iCON
2	000-200-260	1	Cradle, Control Panel, Includes Items 3 thru 5
3	000-200-261	1	Ram Ball
4	000-150-006	2	Screw, Slot Head
5	000-200-262	1	Cable, Junction Box, Cradle
6	000-200-263	1	Box, Junction
7	000-200-463	2	Cable, Receiver, Coiled, 15' Long
8	000-200-265	1	Cable, Power, 2-Wire, 20' Long, Includes Items 9
9	LP	2	Fuse, 30 Amp
10	000-200-330	1	Cable, Solenoid, Dual, 16' Long, Leica iCON,
11	000-200-464	2	Receiver, Laser, 360°, MLS702

AR - As Required NSS - Not Serviced Separately ASN - After Serial No. BSN - Before Serial No. LP - Local Purchase

Para-Level Grading Box PARTS LIST

Figure 11. Cylinder Assembly, 3" Bore x 6" Stroke

ATI Corporation
1-800-342-0905
www.level-best.com



Para-Level Grading Box PARTS LIST



Figure 11. Cylinder Assembly, 3" Bore x 6" Stroke

ATI Corporation
 1-800-342-0905
 www.level-best.com

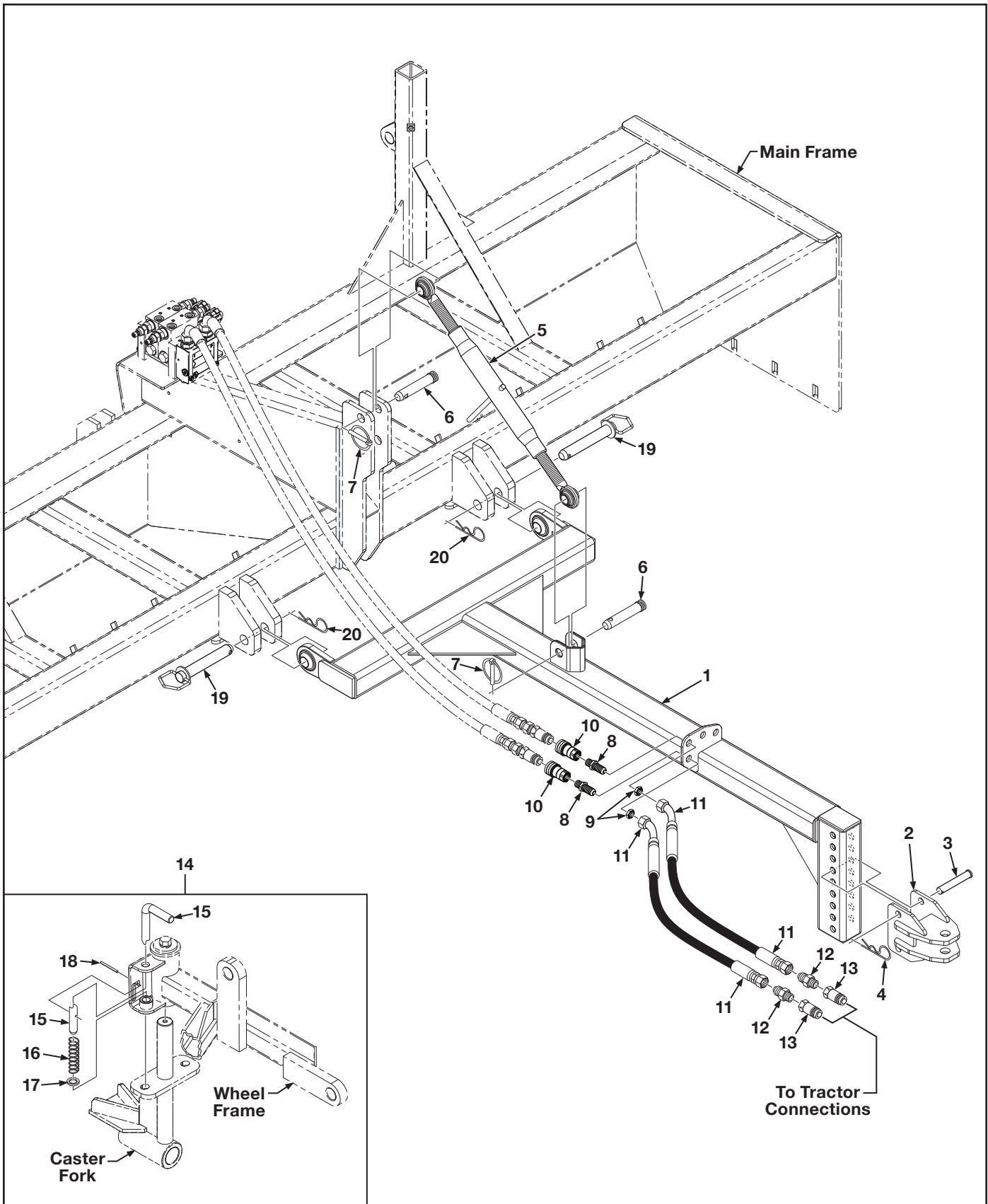
Item	Part No.	Qty	Description
1	000-166-537	1	Cylinder Assembly, 3" Bore x 6" Stroke, Includes Items 2 thru 18
2	000-166-322	1	Clevis Assembly, Butt
3	000-166-323	2	Ring, Back Up
4	NSS	2	O-Ring
5	000-158-195	1	Nut, Lock
6	000-166-325	1	Seal, Crown
7	000-166-326	1	Piston
8	NSS	1	O-Ring
9	000-166-656	1	Rod Assembly
10	000-166-329	1	Tube
11	000-166-330	1	Gland
12	000-166-331	4	Tie Rod Assembly
13	000-166-332	1	Seal, U-Cup
14	000-166-333	1	Seal, Wiper
15	000-166-658	1	Clevis Assembly
16	000-161-068	1	Pin, Cylinder, 1" Dia. x 3-3/8" Long
17	000-161-162	1	Pin, Cylinder, 1" Dia. x 4" Long
18	000-161-137	4	Pin, Cotter, 3/16" Dia. x 1-3/4" Long
	000-166-659	AR	Kit, Cylinder Repair Includes: Items 3, 4, 6, 8, 13 & 14

AR - As Required NSS - Not Serviced Separately ASN - After Serial No. BSN - Before Serial No. LP - Local Purchase

Para-Level Grading Box PARTS LIST

Figure 12. Drawbar Kit, with Wheel Locks (Optional)

ATI Corporation
1-800-342-0905
www.level-best.com



Para-Level Grading Box PARTS LIST



Figure 12. Drawbar Kit, with Wheel Locks (Optional)

ATI Corporation
 1-800-342-0905
 www.level-best.com

Item	Part No.	Qty	Description
	315-616-000	1	Kit, Drawbar, Category II, Includes Items 1 thru 18
1	315-617-000	1	Drawbar, Category II
2	315-657-000	1	Hitch, Clevis
3	000-161-079	2	Pin, Clevis, 3/4" Dia. x 4-1/2" Long
4	000-161-071	2	Pin, Cotter, Hair, .148" Dia. x 2-11/16" Long
5	001-001-104	1	Top Link, Category II, 1" Dia. Pin Holes
6	000-161-085	2	Pin, Top Link, 1" Dia. x 5-1/4" Long
7	000-161-028	2	Pin, Lynch, Locking, 7/16"
8	000-166-447	2	Connector, Bulkhead, 8MP x 8BH, Includes Item 9
9	NSS	2	Nut, Hex, Jam Lock
10	000-166-218	2	Coupler, Quick Disconnect, Ag, Female, 1/2" x 1/2" NPT
11	000-166-616	2	Hose, 1/2" Dia. x 58" Long x 8FJX x 8FJX45, 5,000 PSI
12	000-166-168	2	Adapter, Straight, 8MJ x 8MP
13	000-166-210	2	Coupler, Quick Disconnect, Ag, Male, 1/4"
14	315-645-000	2	Kit, Wheel Lock, Caster Lock, Includes Items 15 thru 18
15	000-161-136	1	Pin, Lock, Caster Fork, 3/4" Dia. x 7" Long
16	000-161-133	1	Spring, Compression
17	000-155-096	1	Washer, Flat, 3/4" Narrow
18	000-161-119	1	Pin, Roll, 3/16" Dia. x 2-1/4" Long
19	000-161-075	2	Pin, Hitch, 1-1/8" Dia. x 7" Long, Category II
20	000-161-019	2	Pin, Hair, Cotter, 3/16" Dia. x 3-3/4" Long

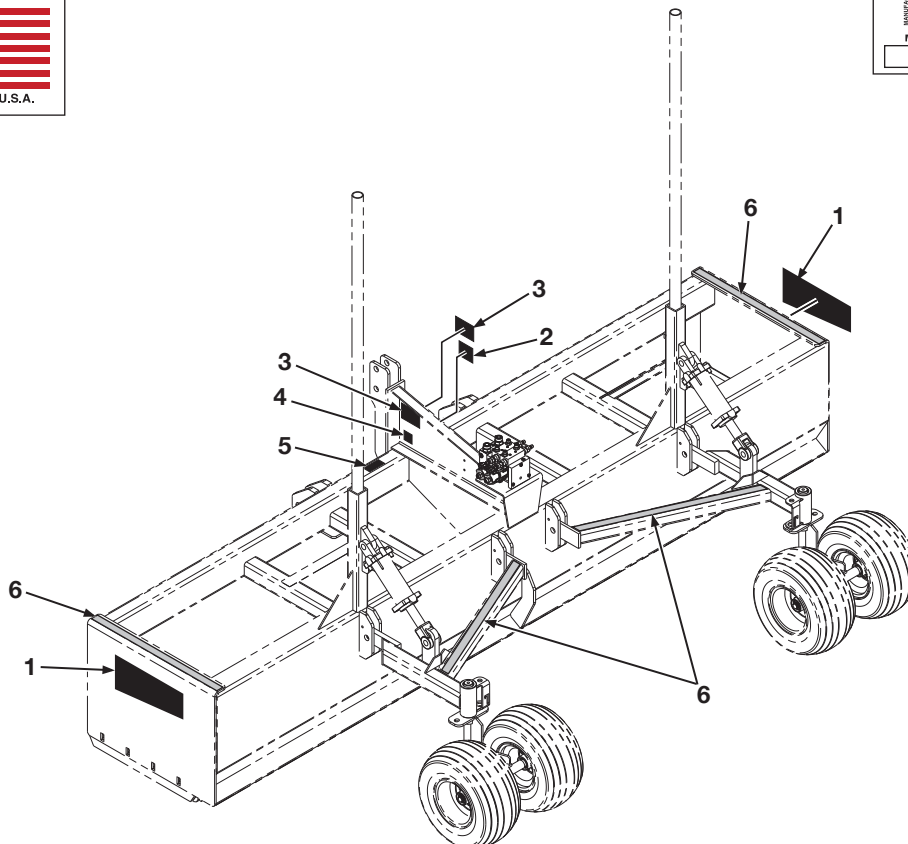
BH-Bulkhead
 MP-Male Pipe
 FP-Female Pipe
 FPX-Female Pipe Swivel
 MB-Male O-Ring Boss
 FB-Female O-Ring Boss
 MJ-Male JIC
 FJ-Female JIC
 FJX-Female JIC Swivel

AR - As Required NSS - Not Serviced Separately ASN - After Serial No. BSN - Before Serial No. LP - Local Purchase

Figure 13. Decals

ATI Corporation
1-800-342-0905
www.level-best.com

Level Best[®]
PRECISION GRADING



Para-Level Grading Box PARTS LIST

Figure 13. Decals



ATI Corporation
 1-800-342-0905
 www.level-best.com

Item	Part No.	Qty	Description
1	000-186-103	2	Decal, Level Best Logo
2	000-186-041	1	Decal, Warning, High-Pressure
3	000-186-094	2	Decal, Warning, This Machine Starts & Stops Automatically
4	000-186-092	1	Decal, Made in U.S.A.
5	000-186-035	1	Plate, Model/Serial, Adhesive Back
6	LP	AR	Skid Grip

AR - As Required NSS - Not Serviced Separately ASN - After Serial No. BSN - Before Serial No. LP - Local Purchase